

# uTrust Token Flex

Parameter	Details
Host Interface	USB 2.0 full speed (12 Mbps)
<b>Smart Card Interface</b>	
Supported Standards	ISO/IEC 7816 Part 1 to 4
Supported Tag ICs	All major ISO/IEC 7816 compliant Smart Card IC support
Smart Card Protocols	T=0, T=1
Smart Card Interface Speed	<ul style="list-style-type: none"> <li>Up to 600 kbps (depending on card)</li> <li>TA1=97</li> </ul>
Smart Card Clock Frequency	ISO/IEC 7816 compliant; Operates up to 4.8 MHz
Supported Smart Card Types	5V, 3V and 1.8V, ISO/IEC 7816 Class A/B/C
Power to Smart Card	60mA in Class A; 55mA in Class B; 35mA in Class C
Smart Card Detection	<ul style="list-style-type: none"> <li>Automatic power on/off</li> <li>Short circuit protection</li> </ul>
Card Size	ID-000 (SIM size)
Contact Type	Sliding Contact Socket (6 pin)
<b>Driver and Software</b>	
PC/SC Driver	PC/SC Specification Ver. 2.0 <ul style="list-style-type: none"> <li>Windows® XP/Vista/7/8/10 (32/64 bit), Windows® Server 2003/2008/2012, Windows® CE 6.0, 7.0</li> <li>MacOS 10.5.x, 10.6.x, 10.7.x, 10.8.x, 10.9.x, 10.10.x, 10.11.x</li> <li>Linux 2.4.x, 2.6.x (32/64 bit)</li> </ul>
Software	<ul style="list-style-type: none"> <li>PC/SC API</li> <li>CT-API (through wrapper on top of PC/SC)</li> <li>M-Card API (through wrapper on top of PC/SC)</li> </ul>
<b>Operating Conditions</b>	
Power Supply	Bus-powered USB
Power Consumption	<20 mA with standard smart; <500 µA in Standby Mode
Dimensions	50 x 18 x 9.5 mm
Weight	6 g
Operating Temperature Range	0° to 50° C (32° to 122° F)
Storage Temperature Range	-20° to 60°C (-4° to 140° F)
Operating Humidity Range	Up to 95% RH non-condensing
Connector	USB Type A Connector
Status Indicator	Green LED
Firmware	CCID
Firmware In-Field Upgradeable	No
<b>Certifications and Compliances</b>	
Systems/Standards	ISO/IEC 7816, USB 2.0 Full Speed, CCID, Microsoft® WHQL
Regulatory/Environmental	CE, FCC, RoHS2, REACH, WEEE
<b>Ordering Information</b>	
Part Number	905599-1 (Black), 905599 (White)

## Instrukcja użytkowania

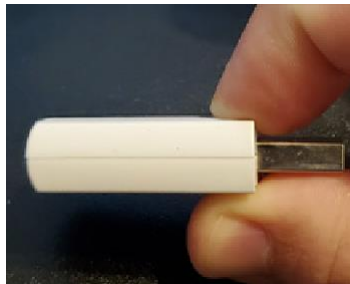
1

**Zdejmij nasadkę**



2

**Wciśnij tackę**



3

**Wysuń tackę**



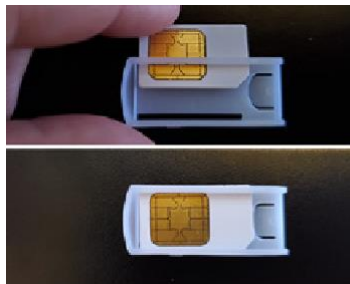
4

**Wyjmij tackę**



5

**Włóż kartę SIM do tacki jak na zdjęciu**



6

**Wsuń tackę z powrotem**

